



HUBLESS CAST IRON PIPES & FITTINGS

MJMA

MITRA JAYA MAKMUR ABADI



HUBLESS CAST IRON

ASTM STANDARD 888



REPLACEMENT GUARANTEE

Tiger Pipe guarantees to replace any Pipe and Fittings having manufacturing defects when used in the services for which intended. No charges for labor or expenses required to repair defective material, or damages incurred by them, will be allowed. The defective item will replace or issue credit for the actual cost of the item (s) ex - factory.

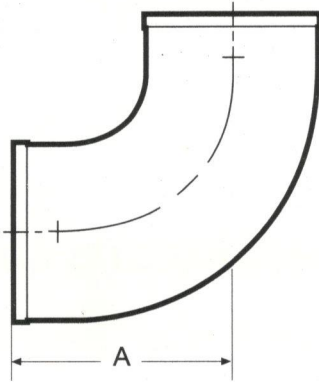
All weight and dimensions are subject to change and are not certified.

HUBLESS CAST IRON

ASTM STANDARD 888

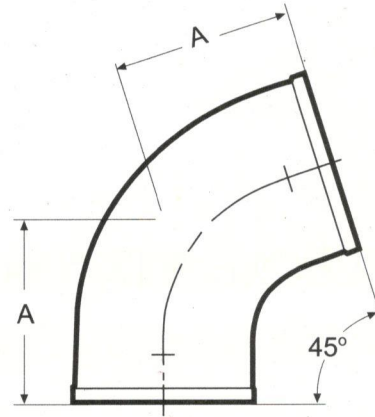


QUARTER BEND



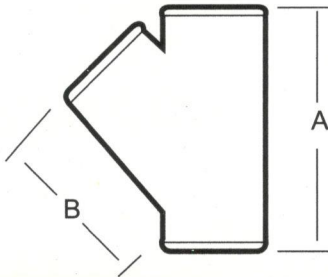
CODE NO.	SIZE	A	WT.
0188	1 1/2	4 1/4	1.9
0190	2	4 1/2	2.4
0192	3	5	3.9
0194	4	5 1/2	6.0
0196	5	6 1/2	9.9
0198	6	7	15.4
0200	8	8 1/2	27.3

EIGHTH BEND



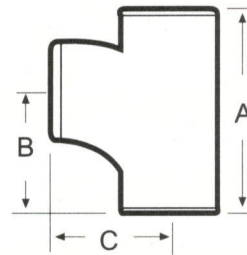
CODE NO.	SIZE	A	WT.
0604	1 1/2	2 1/2	1.4
0606	2	2 3/4	1.7
0608	3	3	2.6
0610	4	3 1/2	4.3
0612	5	3 1/2	6.4
0614	6	4 1/2	9.9
0616	8	5	16.5
0617	10	5 1/2	29.1

WYE



CODE NO.	SIZE	A	B	WT.
1312	1 1/2	6	4	2.4
1314	2	6 5/8	4 5/8	2.6
1316	3x2	6 5/8	5 5/16	3.7
1318	3	8	5 5/16	4.9
1320	4x2	6 5/8	6	5.5
1322	4x3	8	6 1/2	7.2
1324	3	9 1/2	7 1/16	8.8
1332	5	12 5/8	9 1/2	15.4
1326	5x2	8 1/16	7 1/2	8.8
1328	5x3	9 11/16	8	9.9
1330	5x4	11 3/16	8 1/2	13
1334	6x2	8 5/16	8 1/4	11.4
1336	6x3	11 11/16	8 3/4	12.4
1338	6x4	11 3/16	9 1/4	15.4
1340	6x5	12 1/2	10 1/4	17.85
1342	6	14 1/16	10 5/16	22.22
1346	8x3	9 15/16	9	18.7
1348	8x4	11 3/8	10	21.8
1350	8x5	12 13/16	11 3/8	27.6
1352	8x6	14 3/16	11	28.0
1354	8	17 1/8	12	43
1360	10x8	18 3/8	14 11/16	57.0
1361	10	21 1/2	16 1/2	72.0

SAN TEE



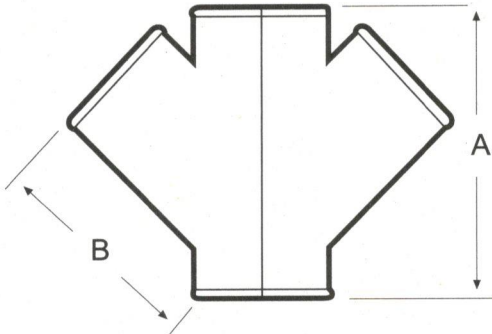
CODE NO.	SIZE	A	B	C	WT.
0806	1 1/2	6 1/2	4 1/4	4 1/4	2.3
0810	2	6 7/8	4 1/2	4 1/2	2.9
0808	2x1 1/2	6 5/8	6 1/2	4 1/2	3.0
0814	3x2	6 7/8	4 1/2	5	4.0
0816	3	8	5	5	4.7
0818	4x2	6 7/8	4	5 1/2	6.0
0820	4x3	8	5	5 1/2	7.2
0822	4	9 1/8	5 1/2	5 1/2	8.0
0824	5x2	8 1/2	5	6 1/2	8.8
0826	5x3	9 5/16	5 1/2	6	12.6
0828	5x4	10 13/32	6	6	13.6
0830	5	11 5/16	6 1/2	6 1/2	15.5
0832	6x2	8 3/16	5	6 1/2	12.5
0838	6x3	9 1/8	5 1/2	6 1/2	14.3
0834	6x4	10 1/8	6	6 1/2	15.4
0836	6	12 1/2	7	7	17.82
0846	8x4	11 1/2	6 1/2	7	24.3
0844	8x5	11 9/16	6 1/2	8	25.5
0840	8	14 9/16	8	8	36.3
0842	8x6	13 1/2	7 1/2	8	27.5

HUBLESS CAST IRON

ASTM STANDARD 888

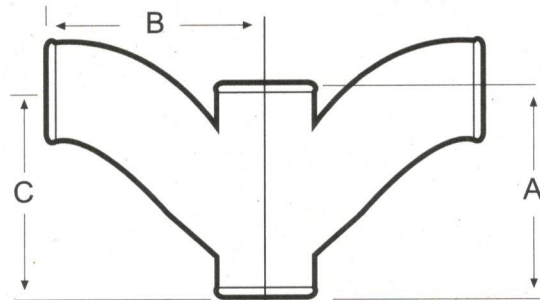


DOUBLE WYE



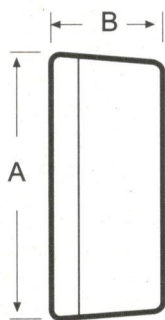
CODE NO.	SIZE	A	B	WT.
1538	2	6 ¹ / ₂	4 ¹ / ₂	4.0
2540	3X2	6 ¹ / ₂	5	4.2
1542	3	6 ¹ / ₂	5 ¹ / ₄	6.3
1544	4X2	8	6	6.5
1546	4X3	8	6 ¹ / ₂	8.4
1548	4	9 ¹ / ₂	7 ¹ / ₁₄	11.0
1552	6X4	11 ¹ / ₁₄	9 ¹ / ₂	19

DOUBLE COMBINATION



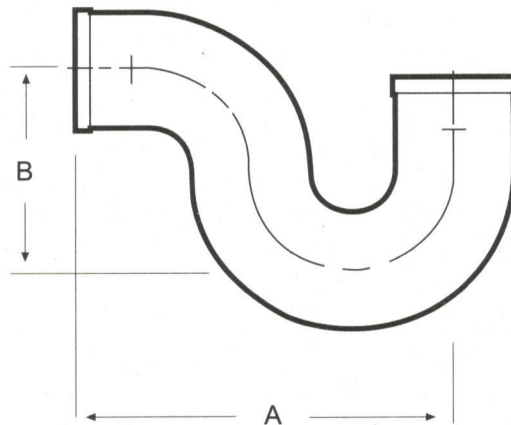
CODE NO.	SIZE	A	B	C	WT.
1802	2	6 ¹ / ₂	4 ¹ / ₂	5 ¹ / ₄	6.2
1804	3X2	6 ¹ / ₂	5	5 ¹ / ₄	6.5
1806	3	8	5	7 ¹ / ₁₆	9.9
1808	4X2	7	7	5 ¹ / ₁₆	9.9
1810	4X3	8	8 ¹ / ₄	7 ¹ / ₄	13.0
1812	4	10	10 ¹ / ₂	9 ¹ / ₄	19.8

CLEAN-OUT PLUG



CODE NO.	SIZE	A	B	WT.
2480	1 ¹ / ₂	1 ¹⁵ / ₁₆	1 ⁵ / ₈	.5
2482	2	2 ¹ / ₂	1 ¹¹ / ₁₆	.7
2484	3	3 ⁵ / ₈	1 ¹³ / ₁₆	1.1
2486	4	4 ⁷ / ₈	1 ³ / ₄	2.0
2488	5	5 ¹ / ₄	1 ³ / ₄	3.5
2490	6	6 ⁷ / ₈	1 ³ / ₄	4.0
2492	8	8 ⁷ / ₈	2 ⁷ / ₈	6.7
2493	10	10 ¹¹ / ₁₆	2 ¹ / ₄	13.2

P TRAP



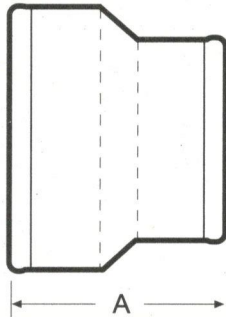
CODE NO.	SIZE	A	B	WT.
2506	1 ¹ / ₂	5 ³ / ₄	3 ¹ / ₂	3.0
2508	2	7 ¹ / ₂	4	3.7
2510	3	9	5 ¹ / ₂	8.1
2512	4	10 ¹ / ₂	6 ¹ / ₂	13.7
2514	6	14	8 ¹ / ₂	33.0

HUBLESS CAST IRON

ASTM STANDARD 888

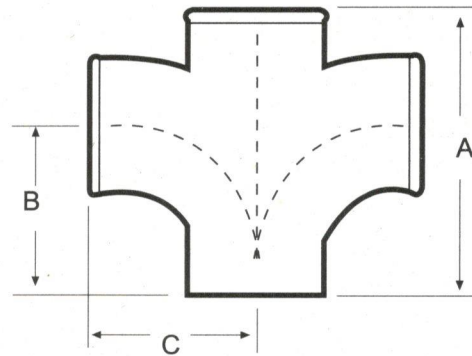


REDUCER



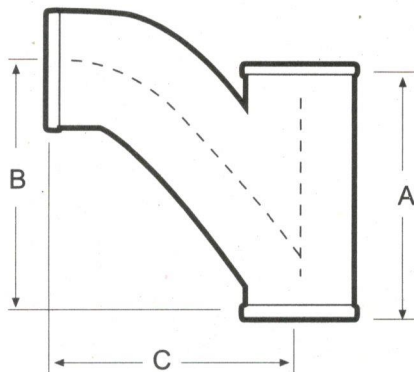
CODE NO.	SIZE	A	WT.
2138	2x1½	3½	1.2
2140	3x2	3½	1.5
2142	4x2	3½	2.3
2144	4x3	3½	2.3
2148	5x3	4	3.5
2150	5x4	4	3.0
2152	6x2	4	4.8
2154	6x3	4	4.0
2156	6x4	4	4.6
2158	6x5	4½	5.0
2160	8x2	4½	7.8
2162	8x3	4½	7.5
2164	8x4	4½	8.0
2166	8x5	5	8.5
2168	8x6	5	9.0
2172	10x4	5½	13.2
2174	10x6	5½	15.0
2175	10x8	6	14.0

SAN CROSS



CODE NO.	SIZE	A	B	C	WT.
1850	1½	6½	4¼	4¼	3.1
1852	2	6⅞	4½	4½	5.3
1854	3x2	6⅞	4½	5	5.4
1856	3	8	5	5	6.2
1858	4x2	6⅞	4½	5½	7.4
1860	4x3	8	4 ¹⁵ / ₁₆	5½	9.7
1862	4	9⅞	5½	5½	11.0
1864	6x4	10⅞	6½	6	17.0

COMBINATION WYE & 1/8 BEND



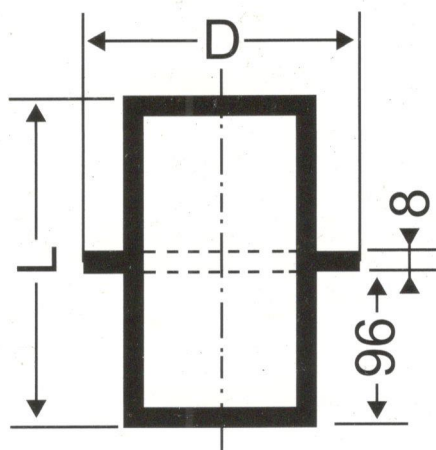
CODE NO.	SIZE	A	B	C	WT.
1694	1½	6	5 ³ / ₈	4 ³ / ₄	2.86
1698	2	6 ⁵ / ₈	5 ³ / ₈	5 ³ / ₈	3.7
1696	2x1½	6	5 ³ / ₈	5	2.8
1702	3	8	8	7 ⁵ / ₁₆	6.6
1700	3x2	6 ⁵ / ₈	6 ³ / ₄	5½	4.6
1708	4	9½	10	9¼	13.0
1704	4x2	6 ⁵ / ₈	5½	7¼	6.3
1706	4x3	8	7¼	8½	8.6
1716	5	12 ⁵ / ₈	12½	11 ³ / ₄	21.0
1710	5x2	8 ¹ / ₁₆	7 ³ / ₄	5 ³ / ₁₆	9.0
1712	5x3	9 ¹ / ₁₆	9	7 ³ / ₄	13.4
1714	5x4	11 ³ / ₁₆	10½	9 ³ / ₄	16.7
1726	6	14 ¹ / ₁₆	14 ³ / ₈	13 ⁵ / ₈	29.8
1718	6x2	8 ⁵ / ₁₆	8¼	6	10.0
1720	6x3	9 ¹¹ / ₁₆	9½	11 ¹ / ₁₆	12.5
1722	6x4	11 ³ / ₁₆	11	9 ³ / ₄	17.5
1724	6x5	11 ¹ / ₁₆	13	11 ¹¹ / ₁₆	23.4
1734	8	16 ¹⁵ / ₁₆	15 ⁹ / ₁₆	14 ³ / ₄	46.2
1728	8x4	11 ³ / ₁₆	11 ⁵ / ₁₆	9 ⁷ / ₈	24.5
1730	8x5	12 ¹¹ / ₁₆	12 ³ / ₁₆	10 ¹⁵ / ₁₆	28.0
1732	8x6	13 ¹⁵ / ₁₆	13 ³ / ₈	12	36.0

HUBLESS CAST IRON

ASTM STANDARD 888

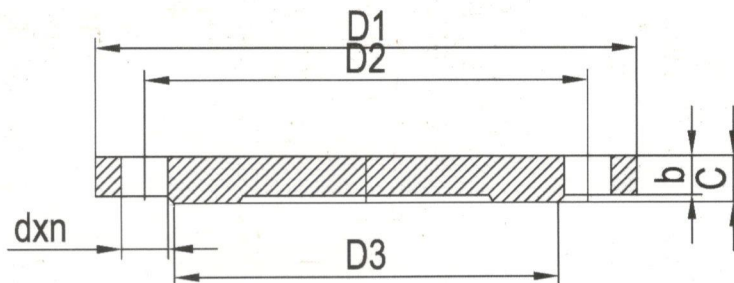


STACK SUPPORT PIPE



CODE NO.	SIZE	D	L	WEIGHT
156372	2	87	220	1.30
156462	3	118	220	1.80
156577	4	145	220	2.40
156837	6	195	220	4.10
156959	8	245	220	5.90
157058	10	340	300	12.35
157123	12	390	300	17.80

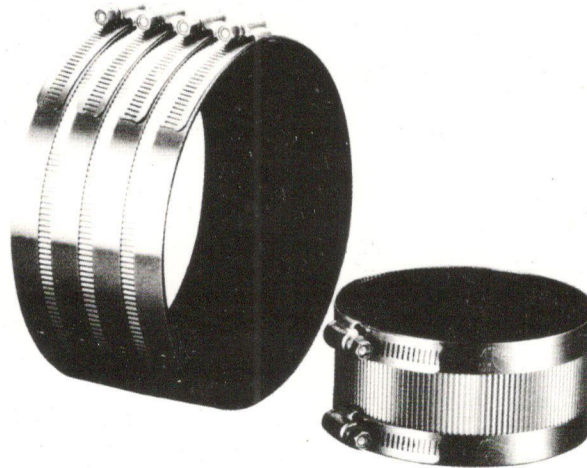
BLIND FLANGE



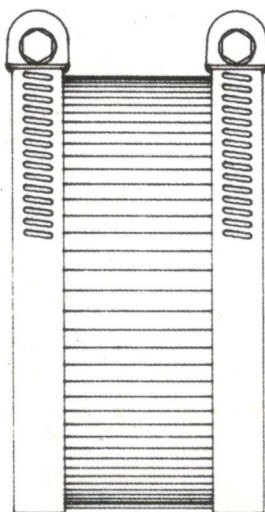
SIZE	D1	D2	D3	C	B	DXN
3	200	160	132	19	16	19x8
4	220	180	156	19	16	19x8
6	285	240	211	19	16	23x8

HUBLESS CAST IRON

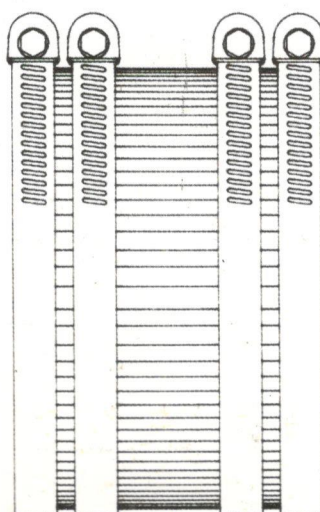
ASTM STANDARD 888



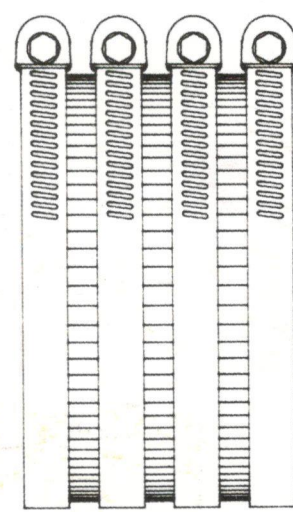
SIZE	QTY/CARTON	WEIGHT/CARTON (kg)
1 1/2"	100	13.0
2"	100	13.4
3"	100	16.2
4"	100	21.4
6"	50	24.8
8"	30	22.2
10"	25	24.0
12"	16	25.5
15"	10	20.0



Size 1/2"



Size 6"



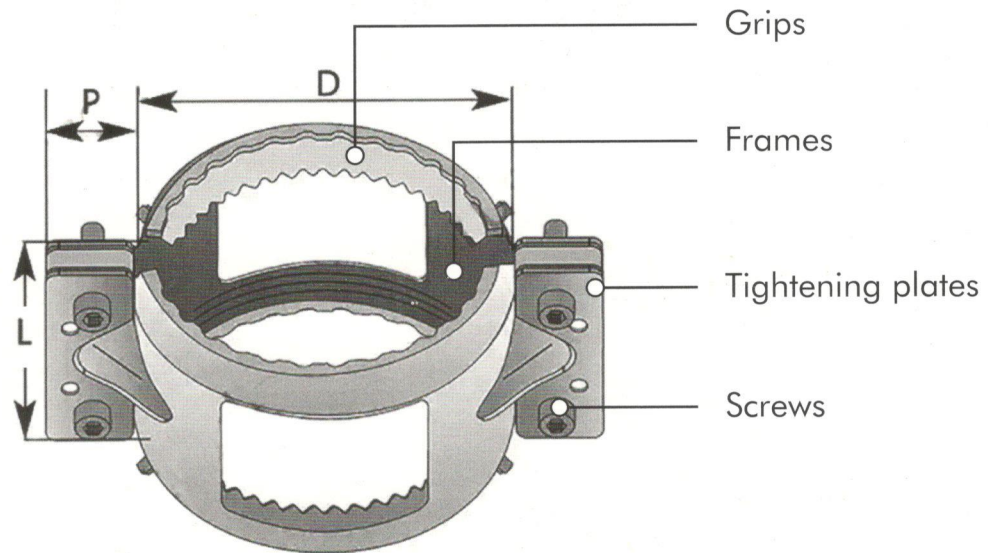
Size 8"

HUBLESS CAST IRON

ASTM STANDARD 888



GRIP COLLARS



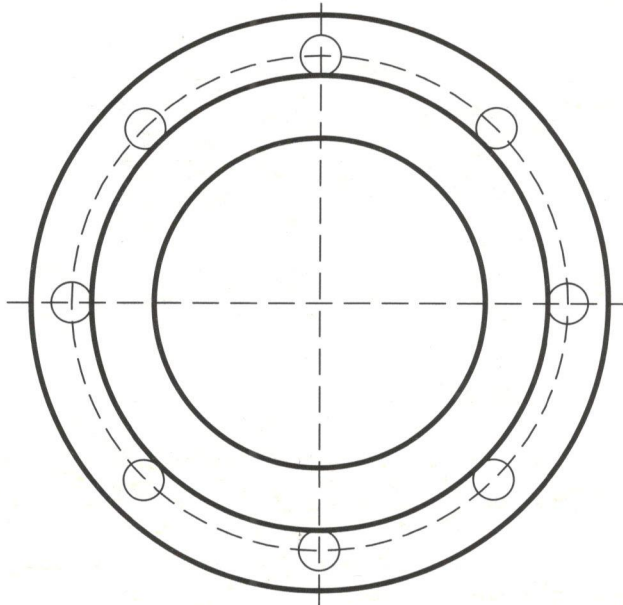
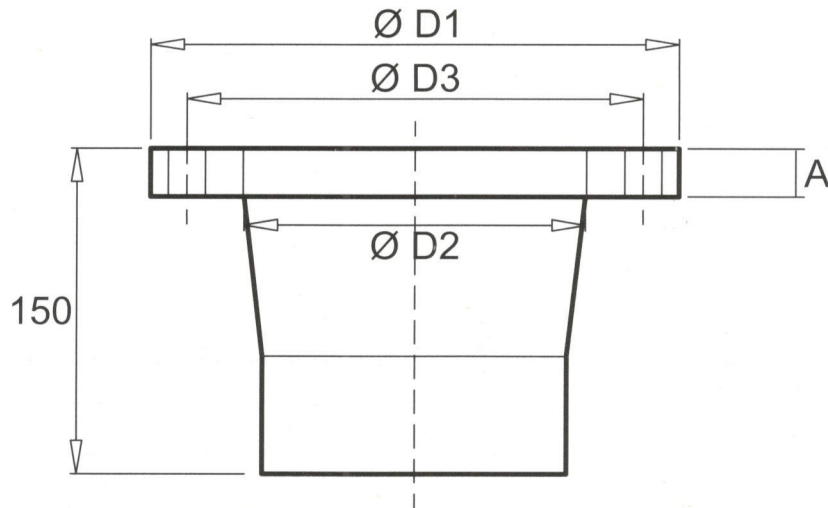
CODE NO.	SIZE (Inch)	P	D	L	Max. Pressure (bar)	Weight	Screw
221261	2"	22	88	76	10	0.45	M 8
221268	3"	25	105	78	10	0.53	M 8
220750	4"	33	145	93	10	0.90	M 8
221270	6"	32	196	102	5	1.23	M 8
221271	8"	32	252	118	5	1.72	M 10

HUBLESS CAST IRON

ASTM STANDARD 888



JOINTING FLANGE



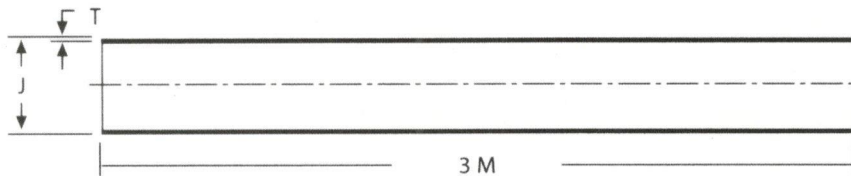
CODE NO.	SIZE	D1	D2	A	D3	Screw	WT.
2604	4"	220	131	24	180	M 16	5.8
2606	6"	285	184	26	240	M 20	9.8
2608	8"	340	235	26	295	M 20	14.5

HUBLESS CAST IRON

ASTM STANDARD 888



HUBLESS PIPE (M.J.)



SIZE	J. Min (mm)	J. Max (mm)	T. Min (mm)	Weight (kg)	Per Bundle	
					QTY	Weight
1 1/2"	46.0	50.0	3.0	13	80	1040
2"	57.0	62.0	3.0	16	62	992
3"	83.0	87.5	3.3	23	58	1334
4"	109.0	114.0	3.8	34	34	1156
6"	158.0	162.0	3.8	51	17	867
8"	210.0	216.0	4.3	81	10	810
10"	266.0	271.0	5.6	127	8	1016
12"	314.0	321.0	5.6	140	6	840
15"	398.0	406.0	7.6	240	3	720

General Supplier



MITRA JAYA MAKMUR ABADI

Komplek 117 No B/12
Pangeran Jayakarta
Jakarta Pusat

021-623 20 230

